
Weighing Diverse Theoretical Models on Turkish *Maqam* Music Against Pitch Measurements: A Comparison of Peaks Automatically Derived from Frequency Histograms with Proposed Scale Tones

Bariş Bozkurt¹, Ozan Yarman², M. Kemal Karaosmanoğlu³, and Can Akkoç⁴

¹Izmir Institute of Technology, Turkey; ²Istanbul Technical University, Turkey; ³Yildiz Technical University, Turkey;
⁴Middle East Technical University, Ankara, Turkey

Reply by:

Marcel de Velde

January 8, 2013, Zwolle, The Netherlands

email: marcel@justintonation.com

Original paper can be found here: <http://www.ozanyarman.com/files/theoryVSpractice.pdf>

First of all I would like to thank the authors of the original paper for their excellent study. It presents the most useful pitch measurements of Turkish Maqam music I could find. However, I feel the most important tuning system has not been included in the comparison. The pure Pythagorean system.

I've therefore added the pitch data in cents of both a 12-tone and 24-tone Pythagorean scale to the comparison tables. The additional data is presented in red, I've made no modification to the original data which is all in black.

I've chosen a 24 tones (24 tones linked by 23 pure 3:2 fifths) as the number of tones so there could be a fair comparison against the other 24 tone scales included in the original study. The Pythagorean system itself is of course not limited to 24 tones, but instead continues indefinitely.

My conclusion is that the 24-tone Pythagorean scale clearly gives a better match overall to the data of this study than the scales compared in the original paper.

Furthermore, I also find Pythagorean to make the most sense of all scales included. It is a pure just intonation system without tempering, the oldest known tuning system in the world and it has already formed the basis for western music for millennia, as well for for instance Chinese music and the Indian 22-tone Shruti (though this is also often interpreted as a 5-limit JI scale, this 5-limit interpretation differs only a maximum of 2 cents from a perfect Pythagorean chain of fifths).

It then makes sense to think the human brain uses a universal system to interpret musical pitch and that this system is based on the simple math of factoring the numbers 2 and 3 giving rise to the Pythagorean system.

Correspondence: Bariş Bozkurt, Izmir Institute of Technology, Electrical and Electronics Engineering Dept., Gülbahçe, Urla, Izmir, Turkey. Email: barisbozkurt@iyte.edu.tr

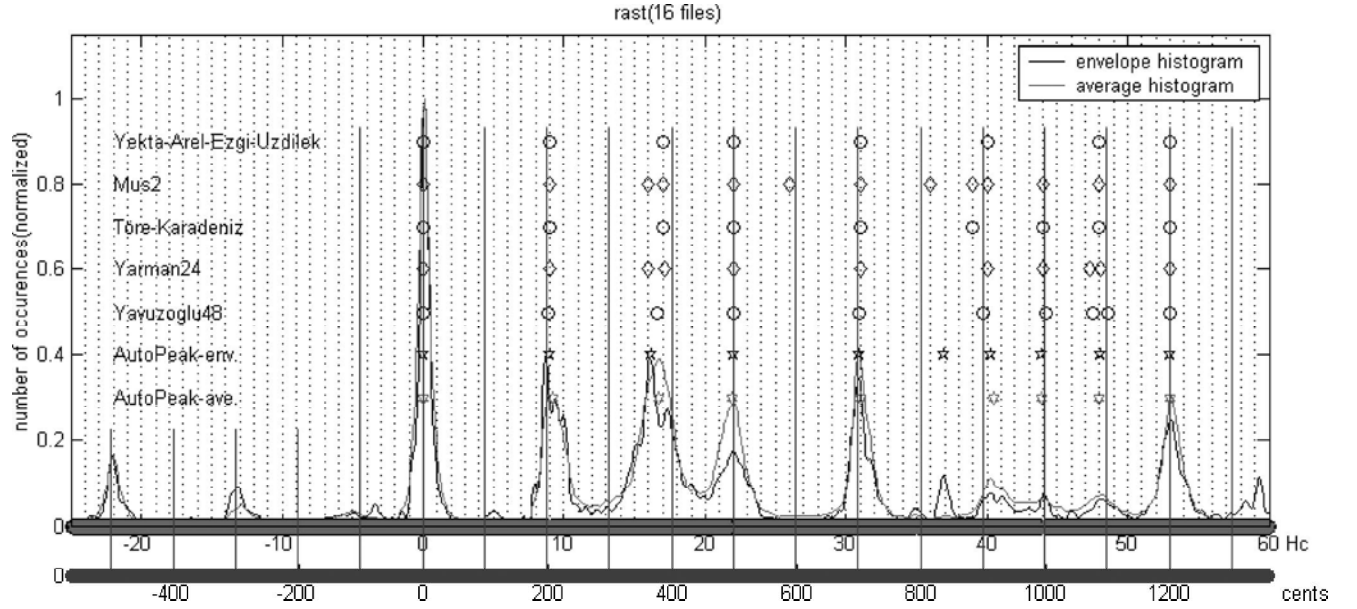


Fig. 4. Histogram computed for *maqam Rast* comparing autopeaks with theorized scales.

Table 1. Data used in histogram for Figure 4 and quantitative comparison of theorized scales with measured relative pitches. M_c , D_c : maximum and average distance values computed with respect to AutoPeak-env. M_a , D_a : maximum and average distance values computed with respect to AutoPeak-ave. E , C : mean efficiency and mean complexity in percentage.

<i>Rast</i>	Distance to tonic in Holderian <i>commas</i>										M_c	D_c	M_a	D_a	E	C	
YAEU	9.01	16.98	22	31				40.01			47.98	0.85	0.23	0.4	0.18	100	75
Mus2	9	16	17	22	26	31	36	39	40	44	48	0.93	0.2	0.41	0.17	68.2	85.8
TK	9		17	22		31		39	44		48	1.24	0.35	1.41	0.31	100	82.9
Yarman24	9.01	15.88	17.06	22		31		40.01	43.99	47.33	48.07	0.26	0.11	0.42	0.18	77.8	70.8
Yavuzoglu48	8.83		16.56	22.08		30.92		39.75	44.17	47.48	48.58	0.49	0.27	0.66	0.31	87.5	85.4
AutoPeak-env.	9	16.13	21.99		30.88	36.93		40.24	43.94		48.12						
AutoPeak-ave.	9.17		16.64	21.9		31.02		40.41	43.91	48.01							

<i>Rast</i>	Distance to tonic in cents										M_c	D_c	M_a	D_a	
YAEU	204	384.5	498.1			701.9				905.9	1086.3	19.2	5.2	9.1	4.1
Mus2	203.8	362.2	384.9	498.1	588.7	701.9	815.1	883.0	905.7	996.2	1086.8	21.0	4.5	9.3	3.8
TK	203.8		384.9	498.1		701.9		883.0	996.2		1086.8	28.1	7.9	31.9	7.0
Yarman24	204	359.5	386.3	498.1		701.9		905.9	996	1071.6	1088.4	5.9	2.5	9.5	4.1
Yavuzoglu48	200		375	500		700		900	1000	1075	1100	11.0	6.1	14.9	7.0
AutoPeak-env.	203.8	365.2	497.9		699.2	836.2		911.1	994.9		1089.5				
AutoPeak-ave.	207.6		376.8	495.8		702.3		914.9	994.2		1087.0				

Pyth12	203.9		384.4	498		702		905.9	996.1		1086.3				
Pyth24	203.9	360.9	384.4	498		702		905.9	996.1	1062.9	1086.3				

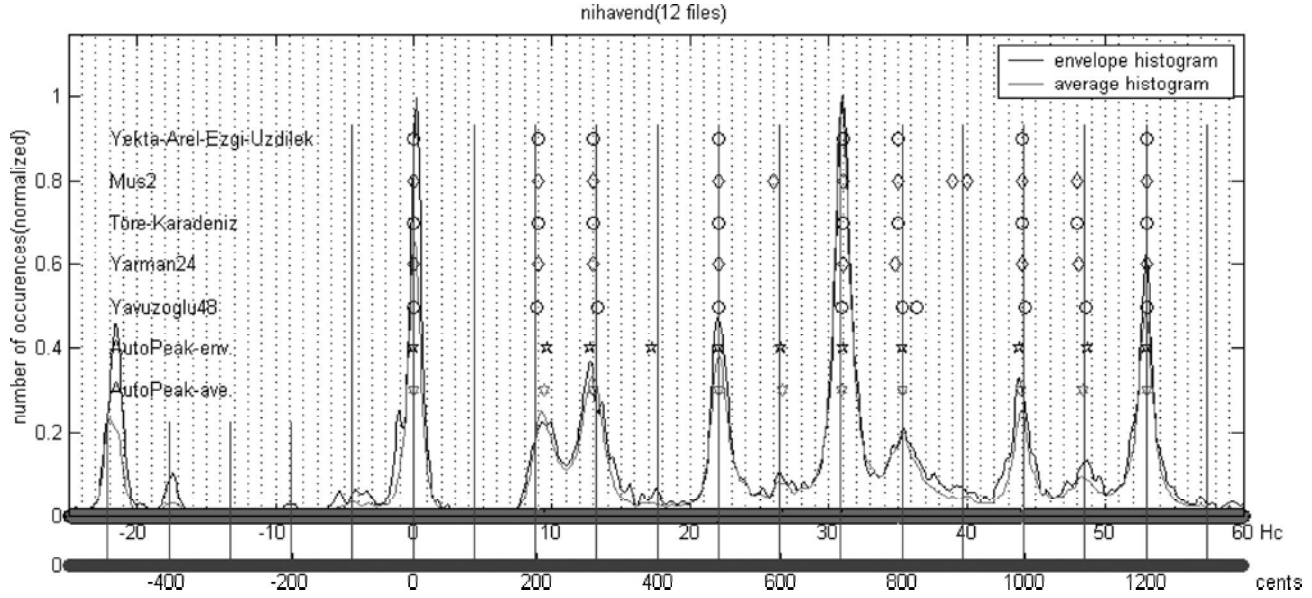


Fig. 5. Histogram computed for *maqam Nihavend* comparing autopeaks with theorized scales.

Table 2. Data used in histogram for Figure 5 and quantitative comparison of theorized scales with measured relative pitches. M_e , D_e : maximum and average distance values computed with respect to AutoPeak-env. M_a , D_a : maximum and average distance values computed with respect to AutoPeak-ave. E , C : mean efficiency and mean complexity in percentage.

<i>Nihavend</i>		Distance to tonic in Holderian <i>commas</i>				M_e	D_e	M_a	D_a	E	C		
YAEU	9.01 12.99	22	31	34.99	43.99	0.57	0.24	0.37	0.16	100	75		
Mus2	9 13	22	26	31	35	0.63	0.32	0.68	0.25	80	84.9		
TK	9 13	22		31	35	0.63	0.3	0.38	0.19	100	82.9		
Yarman24	9.01 12.9	22		31	34.82	43.99	48.07	0.58	0.3	0.49	0.19	100	70.8
Yavuzoglu48	8.83 13.25	22.08		30.92	35.33	44.17	48.58	0.75	0.25	0.55	0.2	87.5	85.4
AutoPeak-env.	9.58 12.74 17.26	22.08	26.48	31	35.35	43.8	48.63						
AutoPeak-ave.	9.38 12.9	22.07	26.68	30.95	35.31	43.94	48.36						

<i>Nihavend</i>		Distance to tonic in cents				M_e	D_e	M_a	D_a		
YAEU	204 294.1	498.1		701.9	792.2	996		12.9	5.4	8.4	3.6
Mus2	203.8 294.3	498.1	588.7	701.9	792.5	996.2	1086.8	14.3	7.2	15.4	5.7
TK	203.8 294.3	498.1		701.9	792.5	996.2	1086.8	14.3	6.8	8.6	4.3
Yarman24	204 292.1	498.1		701.9	788.4	996	1088.4	13.1	6.8	11.1	4.3
Yavuzoglu48	200 300	500		700	800	1000	1100	17.0	5.7	12.5	4.5
AutoPeak-env.	216.9 288.5 390.8	499.9	599.5	701.9	800.4	991.7	1101.1				
AutoPeak-ave.	212.4 292.1	499.7	604.1	700.8	799.5	994.9	1094.9				

Pyth12 203.9 294.1 498 702 792.2 996.1 1086.3 or 1109.8 *

Pyth24 203.9 294.1 498 702 792.2 996.1 1086.3 1109.8 *

* the data seems equally likely to indicate a major seventh of 1109.8 cents here to me instead of a diminished octave of 1086.3 cents.

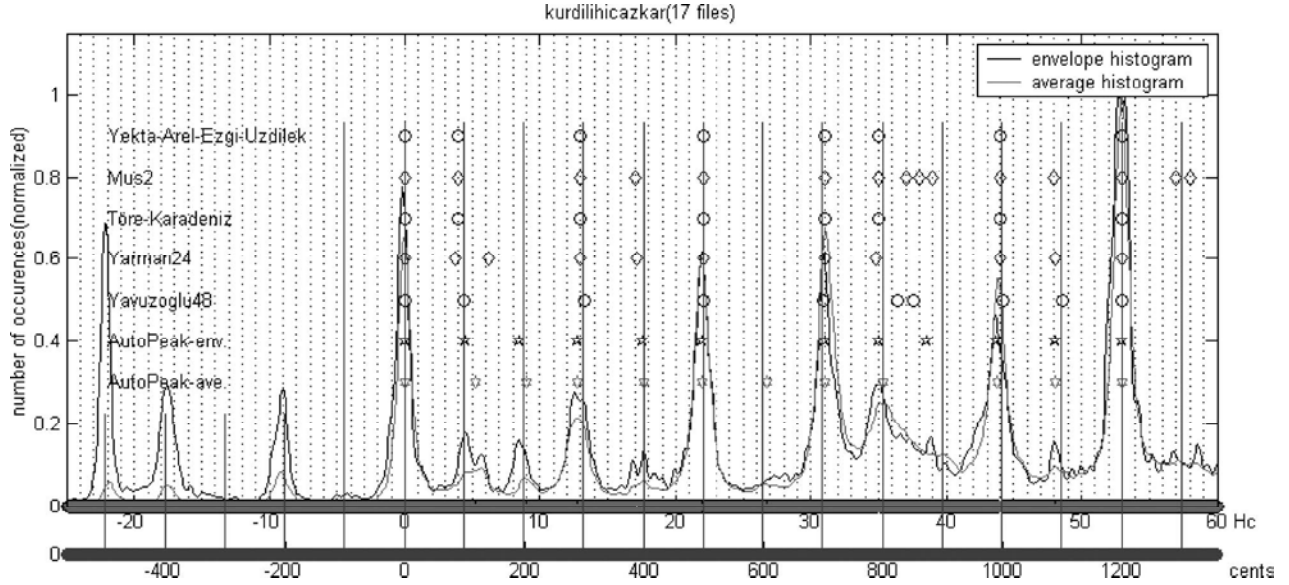


Fig. 6. Histogram computed for *maqams Kürdilihicazkar* comparing autopeaks with theorized scales.

Table 3. Data used in histogram for Figure 6 and quantitative comparison of theorized scales with measured relative pitches. M_c, D_c : maximum and average distance values computed with respect to AutoPeak-env. M_a, D_a : maximum and average distance values computed with respect to AutoPeak-ave. E, C : mean efficiency and mean complexity in percentage.

<i>K.Hicazkar</i>	Distance to tonic in Holderian commas										M_c	D_c	M_a	D_a	E	C	
YAEU	3.99	12.99	22	31	34.99	43.99	0.53	0.2	1.27	0.39	100	75					
Mus2	4	13	17	22	31	35	37	38	39	44	48	0.58	0.25	1.26	0.38	77.3	84.0
TK	4	13	22	31	35	44	0.52	0.2	1.26	0.39	100	85.4					
Yarman24	3.73	6.29	12.9	17.06	22	31	34.82	43.99	48.07	2.19	0.47	1.03	0.35	94.4	64.6		
Yavuzoglu48	4.42	13.25	22.08	30.92	36.44	37.54	44.17	48.58	1.46	0.54	1.09	0.54	93.7	84.4			
AutoPeak-env.	4.52	8.48	12.76	17.58	21.93	31.02	34.98	38.55	43.67	48.06							
AutoPeak-ave	5.26	9	12.71	17.64	21.9	26.74	31.1	35.35	43.77	48.05							

<i>K.Hicazkar</i>	Distance to tonic in cents										M_c	D_c	M_a	D_a	
YAEU	90.3	294.1	498.1	701.9	792.2	996	12	4.5	28.8	8.8					
Mus2	90.6	294.3	384.9	498.1	701.9	792.5	837.7	860.4	883	996.2	1086.8	13.1	5.7	28.5	8.6
TK	90.6	294.3	498.1	701.9	792.5	996.2	11.8	4.5	28.5	8.8					
Yarman24	84.5	142.4	292.1	386.3	498.1	701.9	788.4	996	1088.4	49.6	10.6	23.3	7.9		
Yavuzoglu48	100	300	500	700	825	850	1000	1100	33.1	12.2	24.7	12.2			
AutoPeak-env.	102.3	192	288.9	398.0	496.5	702.3	792	872.8	988.8	1088.2					
AutoPeak-ave	119.1	203.8	287.8	399.4	495.8	605.434	704.1509	800.4	991	1087.9					

Pyth12 90.2 294.1 384.4 498 702 792.2 996.1 1086.3

Pyth24 113.7 137.1 294.1 407.8 498 702 792.2 996.1 1109.8 *

* here I've used Pyth24 in an alternative way which seems to give a higher match to the data, while also making the comma distinction in the first tone. only the last tone (which shows only a very weak peak in the data) has to be interpreted a comma higher at 1109.9 cents, otherwise the 137.1 cents tone would not fit the same 24 tone Pythagorean subscale.

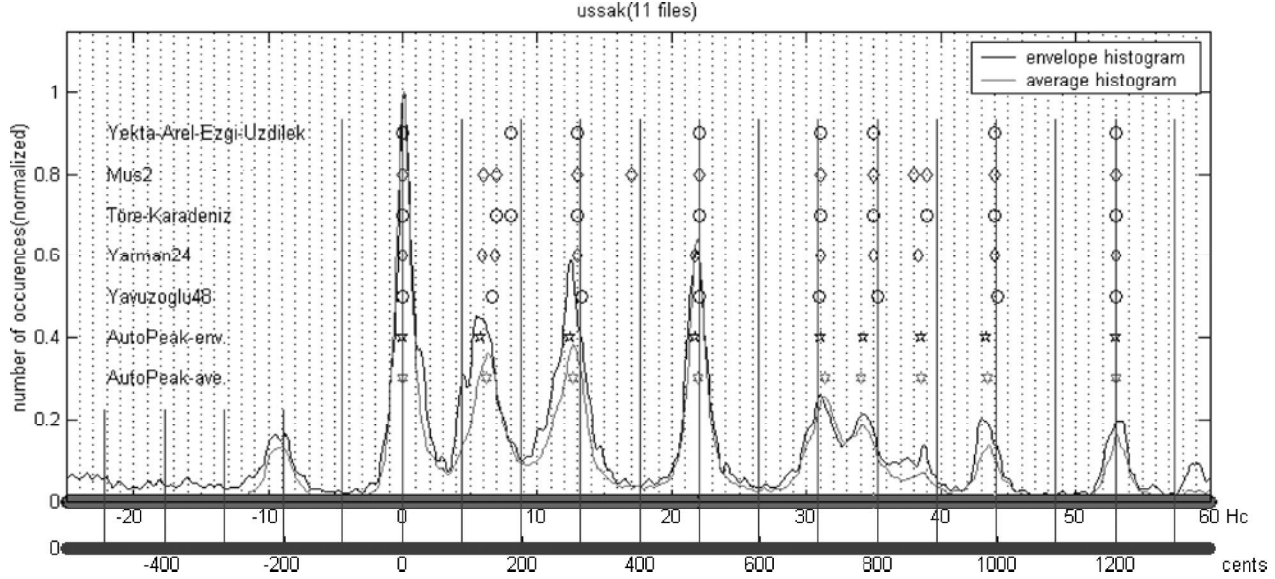


Fig. 7. Histogram computed for *maqam Uşşak* comparing autopeaks with theorized scales.

Table 4. Data used in histogram for Figure 7 and quantitative comparison of theorized scales with measured relative pitches. M_e , D_e : maximum and average distance values computed with respect to AutoPeak-env. M_a , D_a : maximum and average distance values computed with respect to AutoPeak-ave. E , C : mean efficiency and mean complexity in percentage.

<i>Uşşak</i>	Distance to tonic in Holderian <i>commas</i>								M_e	D_e	M_a	D_a	E	C	
YAEU		7.97	12.99	22	31	34.99		43.99	2.24	0.74	1.69	0.68	100	75	
Mus2	6	7	13	17	22	31	35	38 39	44	0.74	0.43	1.01	0.45	70	86.8
TK	7	8	13	22	31	35		39	44	1.27	0.57	1.01	0.52	87.5	82.9
Yarman24	5.84	6.87	12.99	21.74	31	34.99	38.33	43.99	0.73	0.34	1	0.44	87.5	70.8	
Yavuzoglu48	6.63		13.25	22.08	30.92	35.33		44.17	1.07	0.68	1.35	0.61	100	87.5	
AutoPeak-env.	5.73		12.41	21.78	31.04	34.26	38.52	43.34							
AutoPeak-ave.	6.28		12.62	21.89	31.36	33.99	38.53	43.43							

<i>Uşşak</i>	Distance to tonic in cents							M_e	D_e	M_a	D_a		
YAEU	180.5	294.1		498.1	701.9	792.2		996	50.7	16.8	38.3	15.4	
Mus2	135.8	158.5	294.3	384.9	498.1	701.9	792.5	860.4 883	996.2	16.8	9.7	22.9	10.2
TK	158.5	181.1	294.3		498.1	701.9	792.5	883	996.2	28.8	12.9	22.9	11.8
Yarman24	132.2	155.5	294.1		492.2	701.9	792.2	867.8	996	16.5	7.7	22.6	10
Yavuzoglu48	150		300		500	700	799.9		1000	24.2	15.4	30.6	13.8
AutoPeak-env.	129.7		281		493.1	702.8	775.7	872.2	981.2				
AutoPeak-ave.	142.2		285.7		495.6	710.0	769.6	872.4	983.3				

Pyth12	113.7	294.1		498	702	792.2		996.1
Pyth24	156.9	294.1		498	702	768.7	859 882.4	972.6
Pyth24	137.1	294.1		498	702	792.2	839.1	996.1 *

* I've given 2 Pyth24 interpretations here as the first interval seems to match 137.1 best, but for the other intervals the first interpretation with 156.9 cents first interval seems to match best overall.

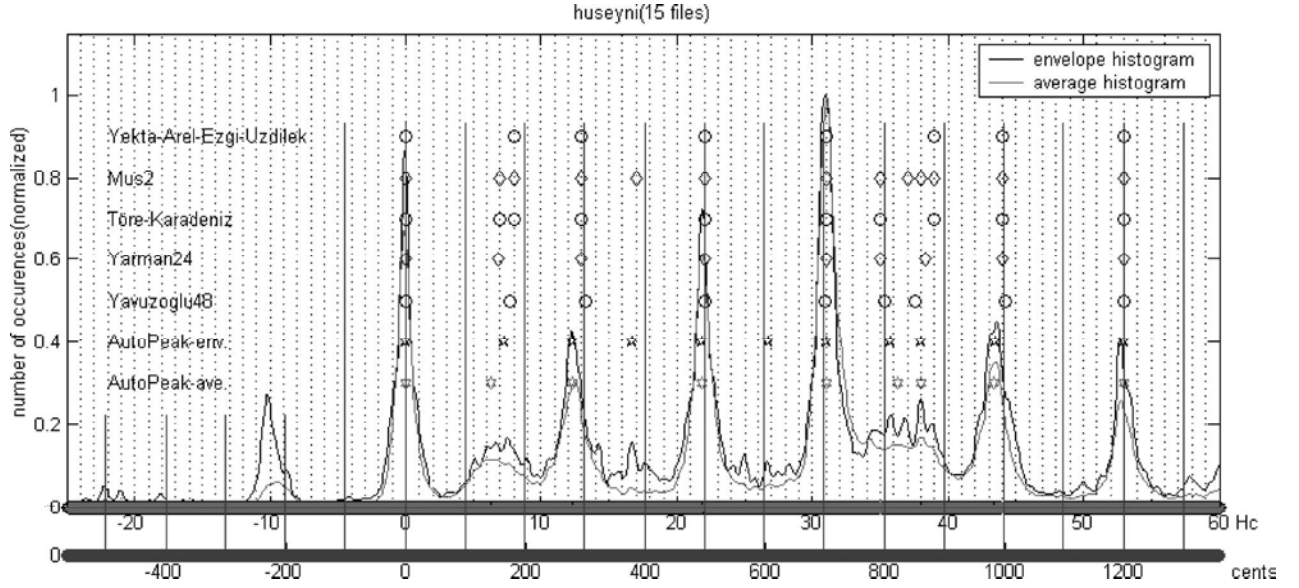


Fig. 8. Histogram computed for *maqam Hüseyini* comparing autopeaks with theorized scales.

Table 5. Data used in histogram for Figure 8 and quantitative comparison of theorized scales with measured relative pitches. M_c, D_c : maximum and average distance values computed with respect to AutoPeak-env. M_a, D_a : maximum and average distance values computed with respect to AutoPeak-ave. E, C : mean efficiency and mean complexity in percentage.

<i>Hüseyini</i>	Distance to tonic in Holderian <i>commas</i>									M_c	D_c	M_a	D_a	E	C	
YAEU	7.97	12.99	22	31					38.97	43.99	0.96	0.52	1.6	0.68	100	75
Mus2	7	13	17	22	31	35	37	38	39	44	0.71	0.34	0.66	0.41	68.2	85.8
TK	7	13	22	31	34.99	38.33	39	44	43.99	44	0.99	0.5	1.34	0.65	87.5	82.9
Yarman24	6.87	12.99	22	31	35.33	37.54	43.38	44.17	43.99	44	0.73	0.42	1.35	0.53	100	70.8
Yavuzoglu48	7.73	13.25	22.08	30.92	35.71	38.01	43.38	44.17	43.99	44	0.92	0.48	1.36	0.7	100	85.4
AutoPeak-env.	7.28	12.33	16.74	21.81	26.76	30.98	36.34	37.98	43.36							
AutoPeak-ave.	6.37	12.35	21.81	31.05												

<i>Hüseyini</i>	Distance to tonic in cents									M_c	D_c	M_a	D_a	
YAEU	180.5	294.1	498.1	701.9					882.3	996	21.7	11.8	36.2	15.4
Mus2	158.5	294.3	384.9	498.1	701.9	792.5	837.7	860.4	882	996.2	16.1	7.7	14.9	9.3
TK	158.5	294.3	498.1	701.9	792.5	867.8	883	996.2	22.4	11.3	30.3	14.7		
Yarman24	155.5	294.1	498.1	701.9	792.2	867.8	996	22.4	9.5	30.6	12			
Yavuzoglu48	175	300	500	700	800	850	1000	16.5	10.9	30.8	15.8			
AutoPeak-env.	164.8	279.2	379	493.8	605.9	701.4	808.5	860.6	982.2	20.8				
AutoPeak-ave.	144.2	279.6	493.8	703.0	822.8	859.9	981.7							

Pyth12	180.5	294.1	384.4	498	702	792.2	882.4	996.1	
Pyth24	157	270.7	384.4	498	702	792.2	858.9	972.6	996.1

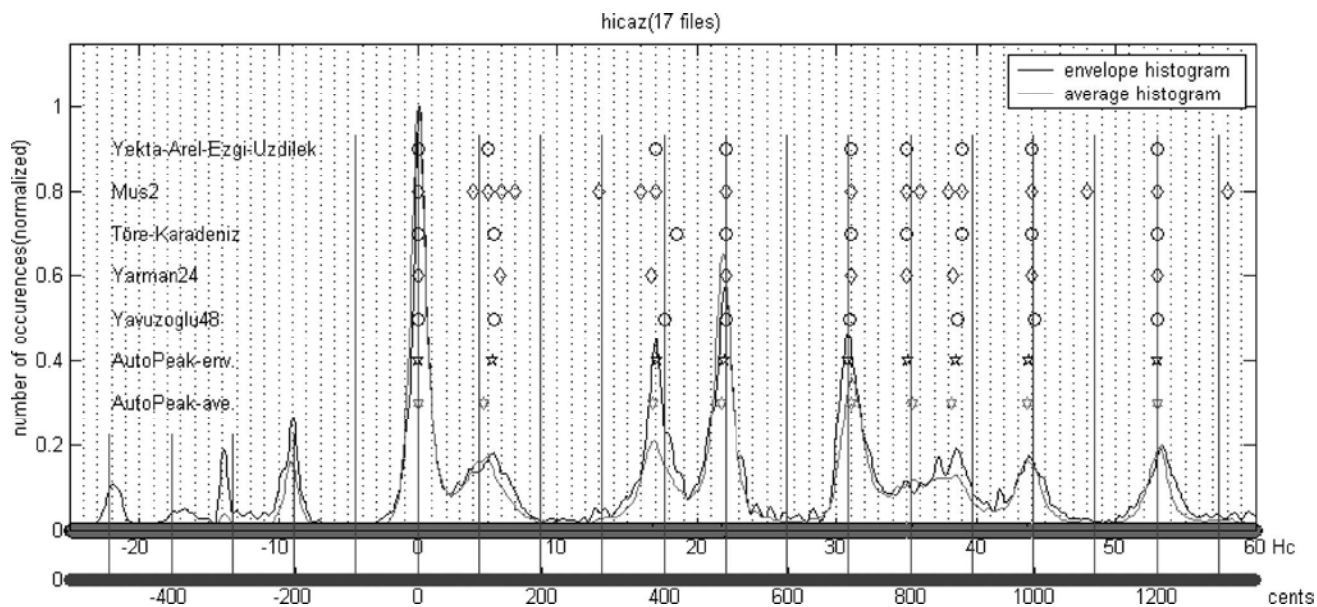


Fig. 9. Histogram computed for *maqam Hicaz* comparing autopeaks with theorized scales.

Table 6. Data used in histogram for Figure 9 and quantitative comparison of theorized scales with measured relative pitches. M_c, D_c : maximum and average distance values computed with respect to AutoPeak-env. M_a, D_a : maximum and average distance values computed with respect to AutoPeak-ave. E, C : mean efficiency and mean complexity in percentage.

<i>Hicaz</i>	Distance to tonic in Holderian <i>commas</i>										M_c	D_c	M_a	D_a	E	C					
YAEU	5.02					16.98	22	31	34.99		38.97	43.99	0.4	0.18	0.74	0.32	100	70.8			
Mus2	4	5	6	7	13	16	17	22	31	35	36	38	39	44	48	0.43	0.19	0.38	0.25	46.7	86.8
TK	5.5					18.5	22	31	35		39	44	1.46	0.38	1.69	0.61	100	82.9			
Yarman24	5.84					16.79	22	31	34.99		38.33	43.99	0.54	0.23	1.19	0.33	100	70.8			
Yavuzoglu48	5.52					17.67	22.08	30.92			38.65	44.17	0.62	0.26	0.87	0.51	100	87.5			
AutoPeak-env.	5.3					17.04	21.92	30.84	35.05		38.57	43.75									
AutoPeak-ave.	4.65					16.81	21.79	31.09	35.38		38.23	43.7									

<i>Hicaz</i>	Distance to tonic in cents										M_c	D_c	M_a	D_a									
YAEU	113.7										384.9	498.1	701.9	792.2		882.3	996	9.1	4.1	16.8	7.2		
Mus2	90.6	113.2	135.8	158.5	204.3	262.3					384.9	498.1	701.9	792.5	815.1	860.4	883	996.2	1086.8	9.7	4.3	8.6	5.7
TK	124.5										418.9	498.1	701.9	792.5		883	996.2			33.1	8.6	38.3	13.8
Yarman24	132.2										380.2	498.1	701.9	792.2		867.8	996			12.2	5.2	26.9	7.5
Yavuzoglu48	125										400	500	700			875	1000			14	5.9	19.7	11.5
AutoPeak-env.	120										385.8	496.3	698.3	793.6		873.3	990.6						
AutoPeak-ave.	105.3										380.6	493.4	703.9	801.1		865.6	989.4						

Pyth12	90.2										384.4	498	702	792.2		882.4	996.1					
Pyth24	113.7										384.4	498	702	792.2		882.4	996.1	*				
Pyth24	90.2										384.4	498	702	792.2		858.9	996.1	*				

* The data seems to indicate the possibility to interpret 113.7 a comma lower and 882.4 a comma lower as provided in the second Pyth24 scale.

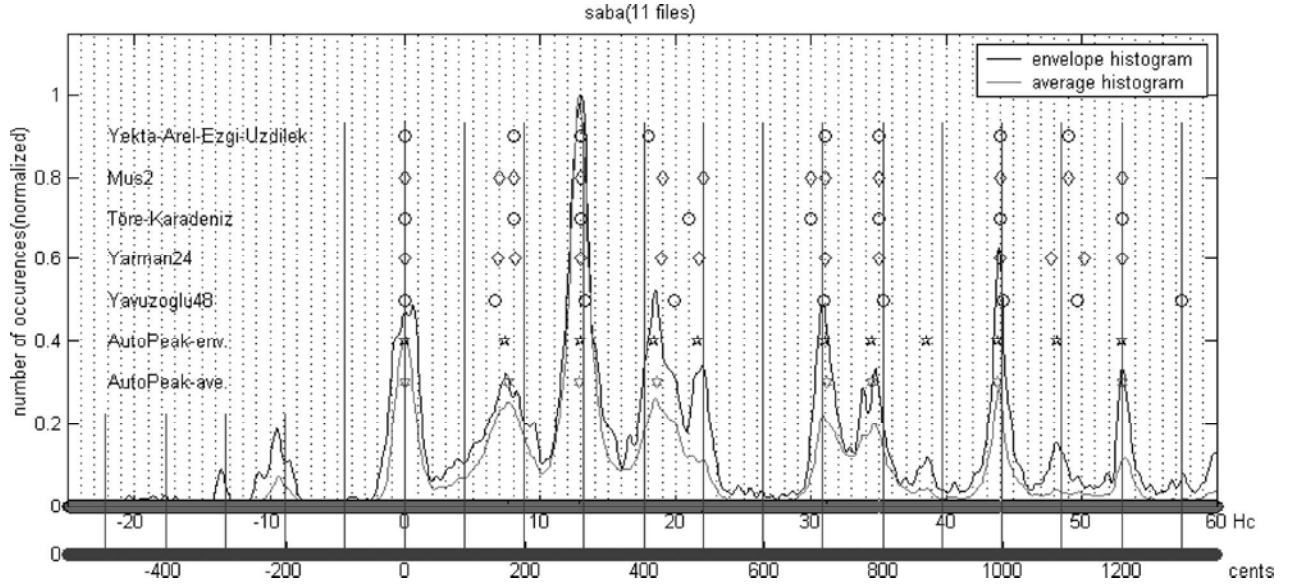


Fig. 10. Histogram computed for *maqam Saba* comparing autopeaks with theorized scales.

Table 7. Data used in histogram for Figure 10 and quantitative comparison of theorized scales with measured relative pitches. M_c, D_c : maximum and average distance values computed with respect to AutoPeak-env. M_a, D_a : maximum and average distance values computed with respect to AutoPeak-ave. E, C : mean efficiency and mean complexity in percentage.

<i>Saba</i>	Distance to tonic in Holderian commas										M_c	D_c	M_a	D_a	E	C
YAEU	7.97	12.99	18.01			31	34.99	43.99	49.02	0.88	0.37	0.69	0.33	92.8	72.9	
Mus2	7	8	13	19	22	30 31	35	44	49	0.86	0.37	0.46	0.28	70	86.8	
TK	8		13		21	30	35	44		0.97	0.49	2.3	0.78	100	85.4	
Yarman24	6.87	8.06	12.99	18.88	21.74	31	34.99	43.99	47.72	50.28 0.52	0.27	0.45	0.26	70	70.8	
Yavuzoglu48	6.63		13.25	19.88		30.92	35.33	44.17	49.69	1.55	0.76	1.18	0.67	92.8	86.5	
AutoPeak-env.	7.39		12.89	18.42	21.67	30.97	34.53	38.49	43.85	48.14						
AutoPeak-ave.	7.61		12.79	18.7		31.14	34.54	43.81								

<i>Saba</i>	Distance to tonic in cents										M_c	D_c	M_a	D_a	
YAEU	180.5		294.1	407.8			701.9	792.2	996		1109.9	19.9	8.4	15.6	7.5
Mus2	158.5	181.1	294.3	430.2	498.1	679.2	701.9	792.5	996.2		1109.4	19.5	8.4	10.4	6.3
TK	181.1		294.3		475.5		679.2	792.5	996.2			22	11.1	52.1	17.7
Yarman24	155.5	182.5	294.1	427.5	492.2		701.9	792.2	996	1080.5	1138.4 11.8	6.1	10.2	5.9	
Yavuzoglu48	150		300	450			700	800	1000		1125	35.1	17.2	26.7	15.2
AutoPeak-env.	167.3		291.8	417.1	490.6		701.2	781.8	871.5	992.8	1090				
AutoPeak-ave.	172.3		289.6	423.4			705.1	782.0	991.9						

Pyth12	203.9	294.1	407.8	498		702	792.2	996.1	1109.8						
Pyth24	180.5	294.1	407.8	498		702	792.2	882.4	996.1	1086.3					

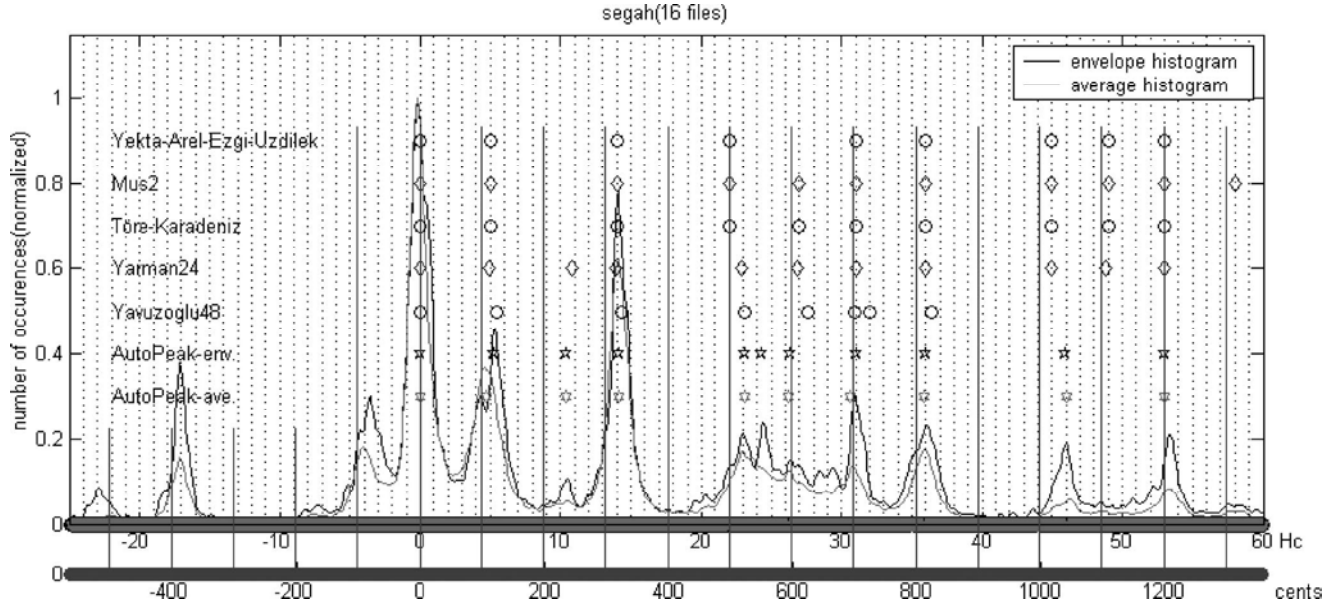


Fig. 11. Histogram computed for *maqam Segah* comparing autopeaks with theorized scales.

Table 8. Data used in histogram for Figure 11 and quantitative comparison of theorized scales with measured relative pitches. M_c, D_c : maximum and average distance values computed with respect to AutoPeak-env. M_a, D_a : maximum and average distance values computed with respect to AutoPeak-ave. E, C : mean efficiency and mean complexity in percentage.

<i>Segah</i>	Distance to tonic in Holderian commas								M_c	D_c	M_a	D_a	E	C	
YAEU	5.02	14.03	22		31	36.02	45.03	49.02	1.08	0.4	1.11	0.49	85.7	75	
Mus2	5	14	22		27	31	36	45	49	1.08	0.45	1.11	0.53	87.5	86.8
TK	5	14	22		27	31	36	45	49	1.08	0.45	1.11	0.53	87.5	82.9
Yarman24	4.93	10.82	13.94	22.95	26.93	31	35.94	44.94	48.84	0.96	0.34	1.06	0.4	88.9	66.7
Yavuzoglu48	5.52	14.35	23.19		27.6	30.92	32.02	36.44		1.29	0.42	1.34	0.55	85.7	87.5
AutoPeak-env.	5.23	10.33	14.15	23.08	24.28	26.31	31.03		35.95	45.9					
AutoPeak-ave.	4.68	10.32	14.08	23.11		26.27	30.69		35.87	46.01					

<i>Segah</i>	Distance to tonic in cents								M_c	D_c	M_a	D_a			
YAEU	113.7		317.7	498.1			701.9	815.5	1019.5	1109.9	24.5	9.1	25.1	11.1	
Mus2	113.2		317	498.1			611.3	701.9	815.1	1018.9	1109.4	24.5	10.2	25.1	12
TK	113.2		317	498.1			611.3	701.9	815.1	1018.9	1109.4	24.5	10.2	25.1	12
Yarman24	111.6	245	315.6	519.6		609.7	701.9	813.7	1017.5	1105.8	21.7	7.7	24	9.1	
Yavuzoglu48	125		325	525		625	700	725	825		29.2	9.5	30.3	12.5	
AutoPeak-env.	118.4	233.9	320.4	522.6	549.7	595.7	702.6	814	1039.2						
AutoPeak-ave.	106	233.7	318.8	523.2		594.8	694.9	812.2	1041.7						

Pyth12	113.7		317.6	498		611.7	702	815.6	1019.6					
Pyth24	113.7	227.4	317.6	521.5	545	611.7	702	815.6	1043					

Unlike all the other scales presented here, Pyth24 seems to match the data very closely.

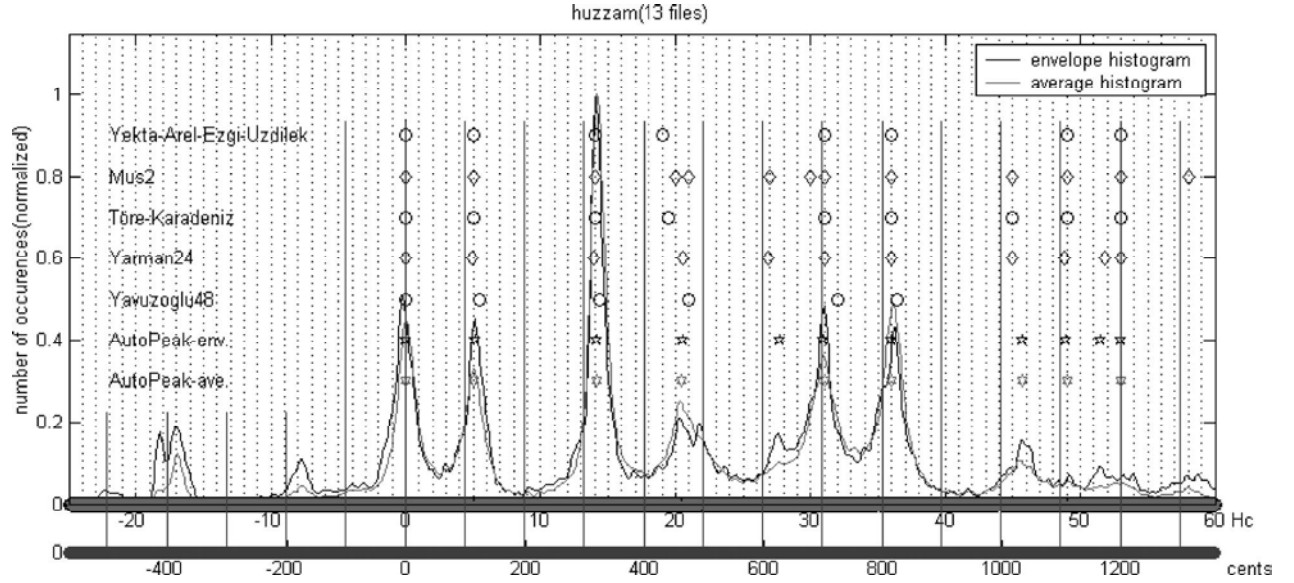


Fig. 12. Histogram computed for *maqam Huzzam* comparing autopeaks with theorized scales.

Table 9. Data used in histogram for Figure 12 and quantitative comparison of theorized scales with measured relative pitches. M_c, D_c : maximum and average distance values computed with respect to AutoPeak-env. M_a, D_a : maximum and average distance values computed with respect to AutoPeak-ave. E, C : mean efficiency and mean complexity in percentage.

<i>Hüzzam</i>	Distance to tonic in Holderian commas										M_c	D_c	M_a	D_a	E	C	
YAEU	5.02	14.03	19.05				31	36.02	49.02		1.42	0.3	1.4	0.28	100	75	
Mus2	5	14	20	24	27	30	31	36	45	49	0.75	0.29	0.66	0.2	75	85.8	
TK	5	14	19.5				31	36	45	49	0.97	0.3	0.95	0.27	100	82.9	
Yarman24	4.93	13.94	20.59		26.93		31	35.94	44.94	48.84	51.81	0.82	0.3	0.71	0.2	88.9	66.7
Yavuzoglu48	5.52	14.35	20.98				32.02	36.44				1.11	0.54	1.05	0.54	100	89.6
AutoPeak-env.	5.11	14.12	20.47		27.75		30.91	35.98	45.74	48.95	51.46						
AutoPeak-ave.	4.99	14.17	20.45				30.97	36.03	45.66	48.98							

<i>Hüzzam</i>	Distance to tonic in cents										M_c	D_c	M_a	D_a	
YAEU	113.7	317.7	431.3				701.9	815.5	1109.9		32.2	6.8	31.7	6.3	
Mus2	113.2	317	452.8	475.5	611.3	679.2	701.9	815.1	1018.9	1109.4	17	6.6	14.9	4.5	
TK	113.2	317	441.5				701.9	815.1	1018.9	1109.4	22	6.8	21.5	6.1	
Yarman24	111.6	315.6	466.2		609.7		701.9	813.7	1017.5	1105.8	1173.1	18.6	6.8	16.1	4.5
Yavuzoglu48	125	325	475				725	825				25.1	12.2	23.8	12.2
AutoPeak-env.	115.7	319.7	463.5		628.3		699.8	814.6	1035.6	1108.3	1165.1				
AutoPeak-ave.	113	320.8	463.0				701.2	815.8	1033.8	1109					

Pyth12 113.7 317.6 498 611.7 702 815.6 1019.6 1109.8
 Pyth24 113.7 317.6 474.6 611.7 702 815.6 1019.6 1109.8 1176.5